



SNP Skewed Nail Plate

The SNP3 Skewed Nail Plate is designed and tested for connecting square cut corner jack trusses at skewed up to 45°.

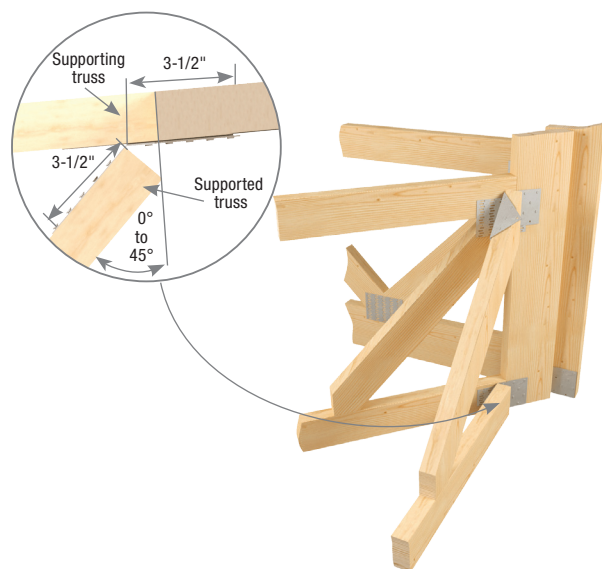
Materials: 16 gauge

Finish: G90 galvanizing

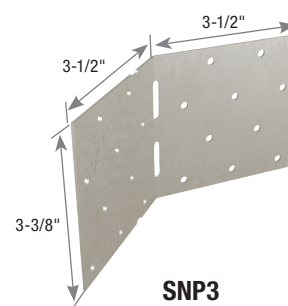
Codes: Load values are derived from data submitted to various North American building code evaluators.

Installation:

- Install specified fasteners from bend line out from each end. Not all nail holes will be filled.
- Attach to the supported truss on the acute angle side so the SNP3 runs behind the end of the jack.
- Set jack truss against supporting truss and nail on exposed flange.
- **Bend angle only once.**
- 8d common (0.131" dia. x 2-1/2" long) nails may be substituted for 8d x 1-1/2" nails with no reduction in load.



Typical SNP3 installation



SNP3

USP Stock No.	Steel Gauge	Fastener Schedule ²		Unit	DF Factored Resistance		S-P-F Factored Resistance	
		Each End			Vertical 100%	Upift ¹ 115%	Vertical 100%	Upift ¹ 115%
		Qty	Type					
SNP3	16	6	8d x 1-1/2	Lbs	865	995	680	780
				kN	3.85	4.43	3.02	3.47

1) Factored resistances have been increased 15% for short-term loads such as wind and earthquake; no further increase is allowed.

2) **NAILS:** 8d x 1-1/2 nails are 0.131" dia. x 1-1/2" long.

PEO
Certificate No. 10889485



Nov. 2, 2016

Use in conjunction with USP's current Canadian Product Catalogue for detailed hanger information.



**USP supplies quality products
to build Stronger Safer Structures**
USPconnectors.com

Valid through Dec. 31, 2018

USP2320-SNP
November 2016



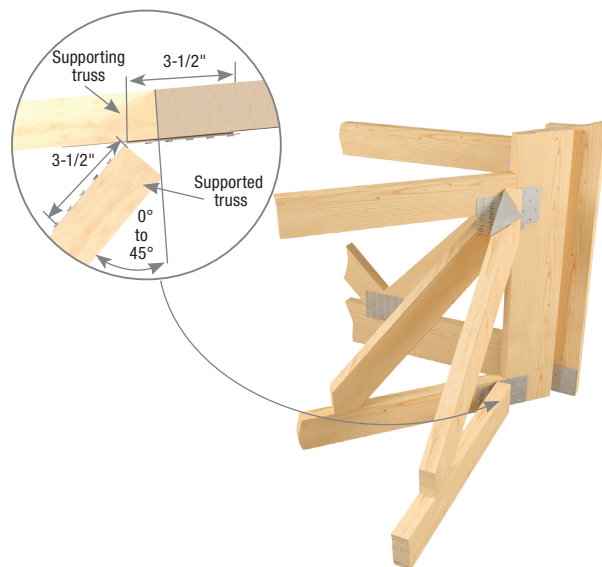
SNP Skewed Nail Plate

The SNP3 Skewed Nail Plate is designed and tested for connecting square cut corner jack trusses at skew up to 45°.

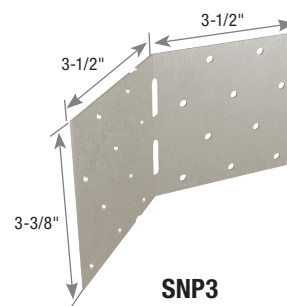
Materials: 16 gauge
Finish: G90 galvanizing
Codes: Load values are derived from data submitted to various North American building code evaluators.

Installation:

- Install specified fasteners from bend line out from each end. Not all nail holes will be filled.
- Attach to the supported truss on the acute angle side so the SNP3 runs behind the end of the jack.
- Set jack truss against supporting truss and nail on exposed flange.
- **Bend angle only once.**
- 8d common (0.131" dia. x 2-1/2" long) nails may be substituted for 8d x 1-1/2" nails with no reduction in load.



Typical SNP3 installation

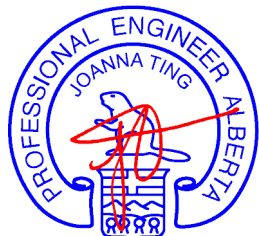


SNP3

USP Stock No.	Steel Gauge	Fastener Schedule ²		Unit	DF Factored Resistance		S-P-F Factored Resistance	
		Each End			Vertical 100%	Upift ¹ 115%	Vertical 100%	Upift ¹ 115%
		Qty	Type					
SNP3	16	6	8d x 1-1/2"	Lbs kN	865 3.85	995 4.43	680 3.02	780 3.47

1) Factored resistances have been increased 15% for short-term loads such as wind and earthquake; no further increase is allowed.
 2) **NAILS:** 8d x 1-1/2" nails are 0.131" dia. x 1-1/2" long.

APEGA
Permit No. P3837



Nov. 2, 2016



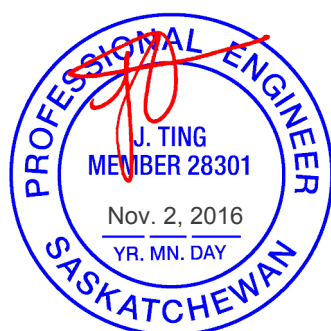
Nov. 2, 2016

APEGM
Certificate No. 96



Nov. 2, 2016

APEGS
Certificate No. C0940



Nov. 2, 2016
YR. MN. DAY

Use in conjunction with USP's current Canadian Product Catalogue for detailed hanger information.



USP supplies quality products
to build Stronger Safer Structures
USPconnectors.com

Valid through Dec. 31, 2018

USP2320-SNP
November 2016



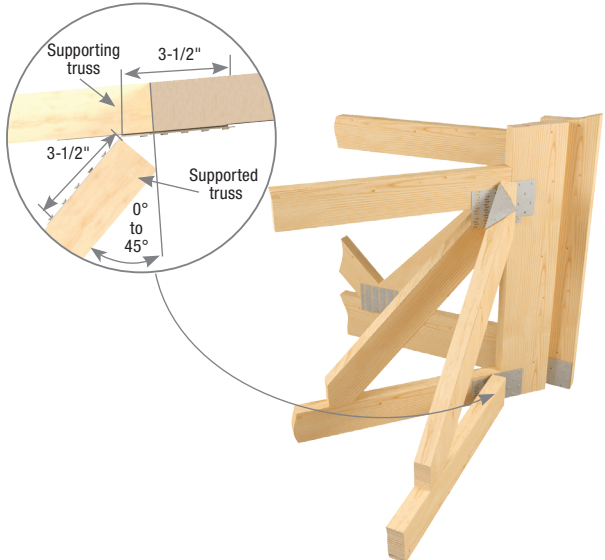
SNP Skewed Nail Plate

The SNP3 Skewed Nail Plate is designed and tested for connecting square cut corner jack trusses at skew up to 45°.

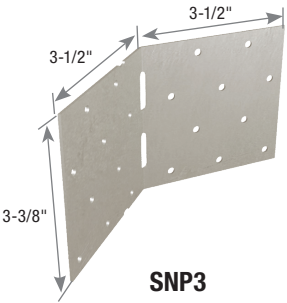
Materials: 16 gauge
Finish: G90 galvanizing
Codes: Load values are derived from data submitted to various North American building code evaluators.

Installation:

- Install specified fasteners from bend line out from each end. Not all nail holes will be filled.
- Attach to the supported truss on the acute angle side so the SNP3 runs behind the end of the jack.
- Set jack truss against supporting truss and nail on exposed flange.
- **Bend angle only once.**
- 8d common (0.131" dia. x 2-1/2" long) nails may be substituted for 8d x 1-1/2" nails with no reduction in load.



Typical SNP3 installation



SNP3

USP Stock No.	Steel Gauge	Fastener Schedule ²		Unit	DF Factored Resistance		S-P-F Factored Resistance	
		Each End			Vertical 100%	Upift ¹ 115%	Vertical 100%	Upift ¹ 115%
		Qty	Type					
SNP3	16	6	8d x 1-1/2	Lbs	865	995	680	780
				kN	3.85	4.43	3.02	3.47

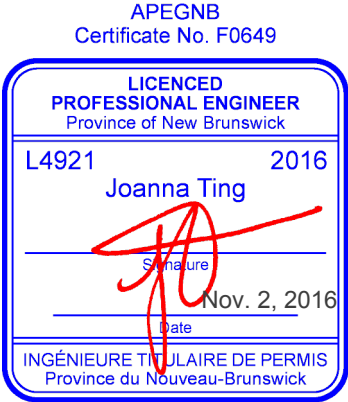
1) Factored resistances have been increased 15% for short-term loads such as wind and earthquake; no further increase is allowed.
 2) **NAILS:** 8d x 1-1/2 nails are 0.131" dia. x 1-1/2" long.



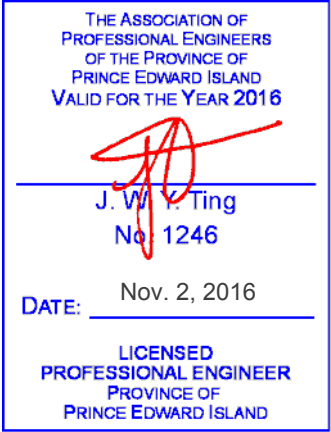
Nov. 2, 2016



Nov. 2, 2016



Nov. 2, 2016



Use in conjunction with USP's current Canadian Product Catalogue for detailed hanger information.



USP supplies quality products to build Stronger Safer Structures
USPconnectors.com

Valid through Dec. 31, 2018

USP2320-SNP
 November 2016